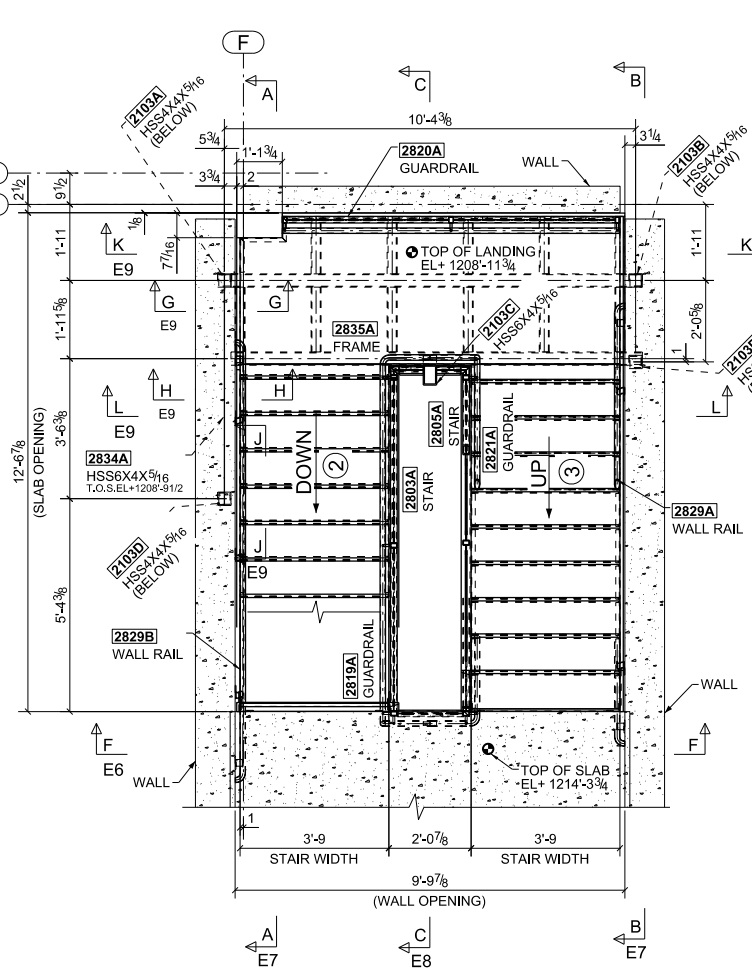
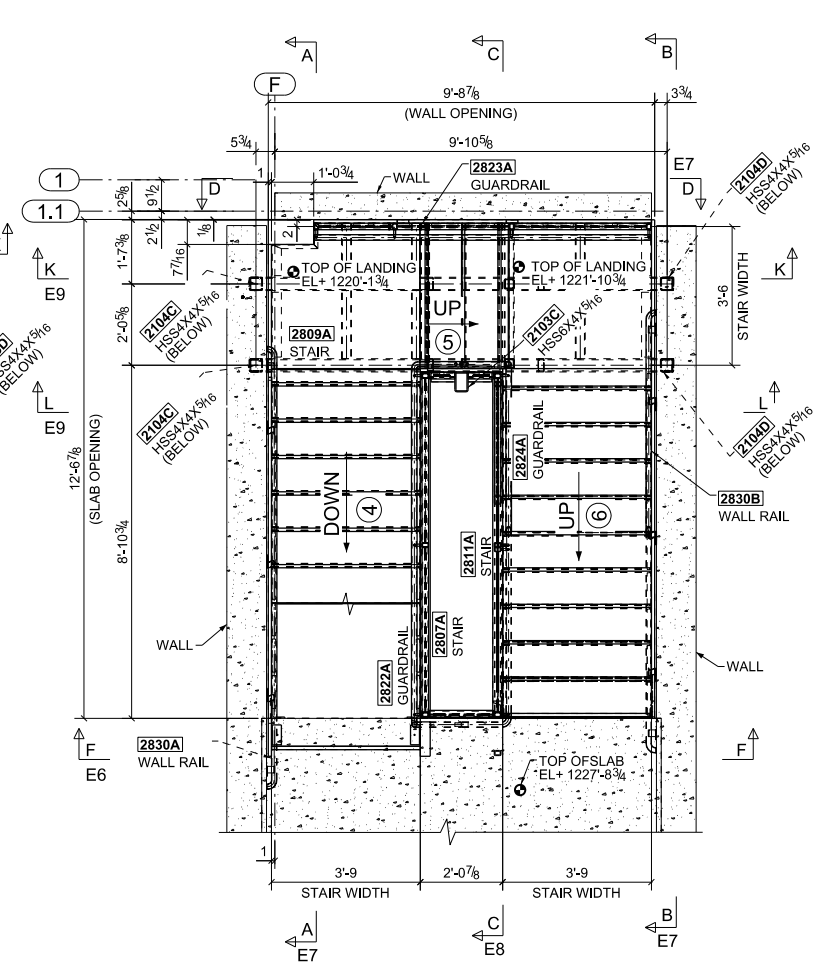


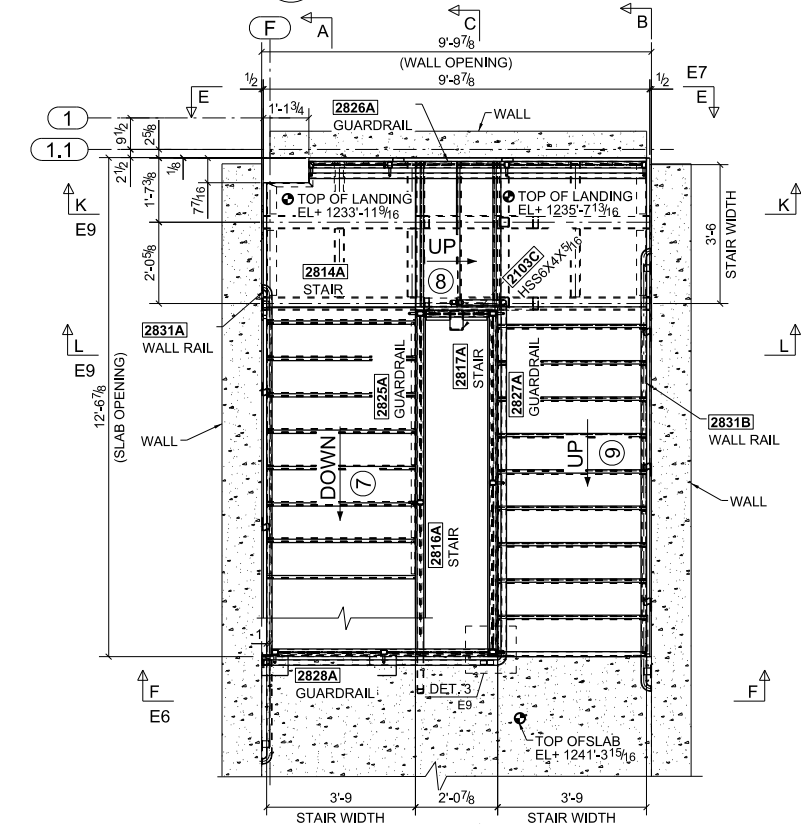
1 FIRST FLOOR STAIR PLAN
 (@ EL: 1203'-7 3/4")



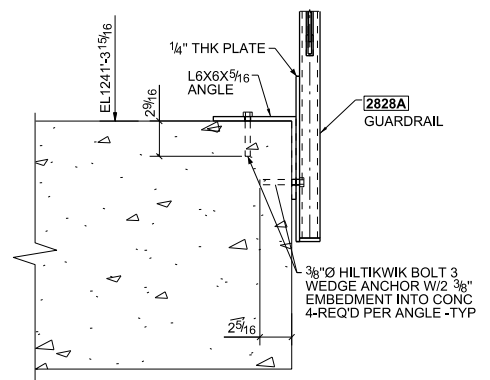
2 SECOND FLOOR STAIR PLAN
 (@ EL: 1208'-11 3/4" to EL: 1214'-3 3/4")



3 THIRD FLOOR STAIR PLAN
 (@ EL: 1220'-1 3/4" to EL: 1227'-8 3/4")



4 FOURTH FLOOR STAIR PLAN
 (@ EL: 1233'-11 9/16" to EL: 1241'-3 15/16")



6 M - M
 E6

NOTE:
 1. Final finish floor elevations are provided by the contractor and shall be field verified prior to fabrication.
 2. In all cases - clear dimension from handrail to guard/wall shall be 1.5" minimum. Clear dimension for stairs shall be 3'-10 1/4" (wall to inside of guard - handrails encroach into this dimension 2.75" each side) -TYP.
 3. Max Riser height shall be 7" - minimum tread depth shall be 11" no exceptions.
 4. Fabricator and erector shall verify the above prior to fabrication and erection.

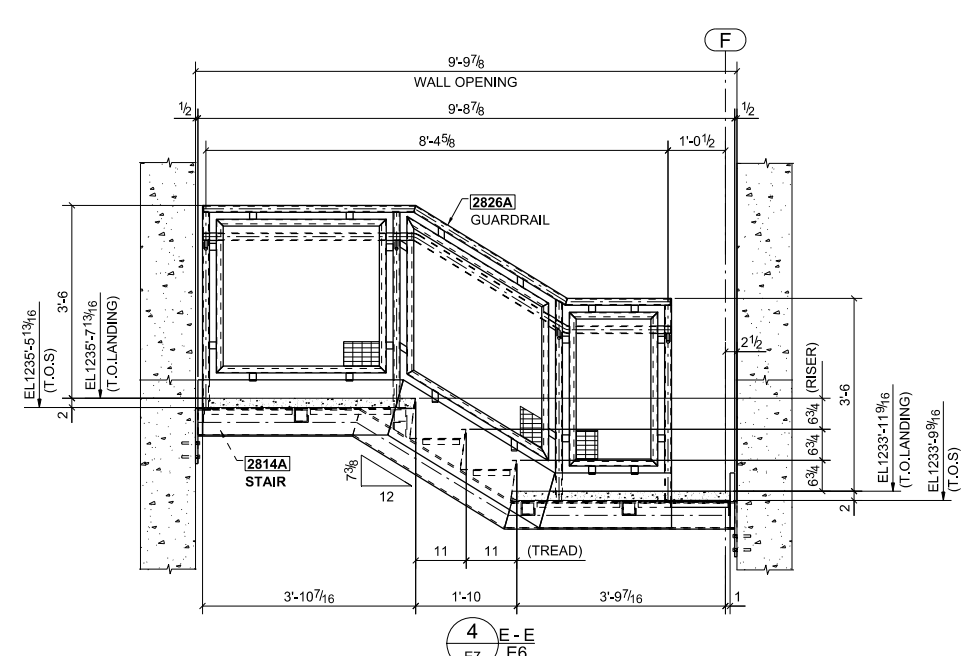
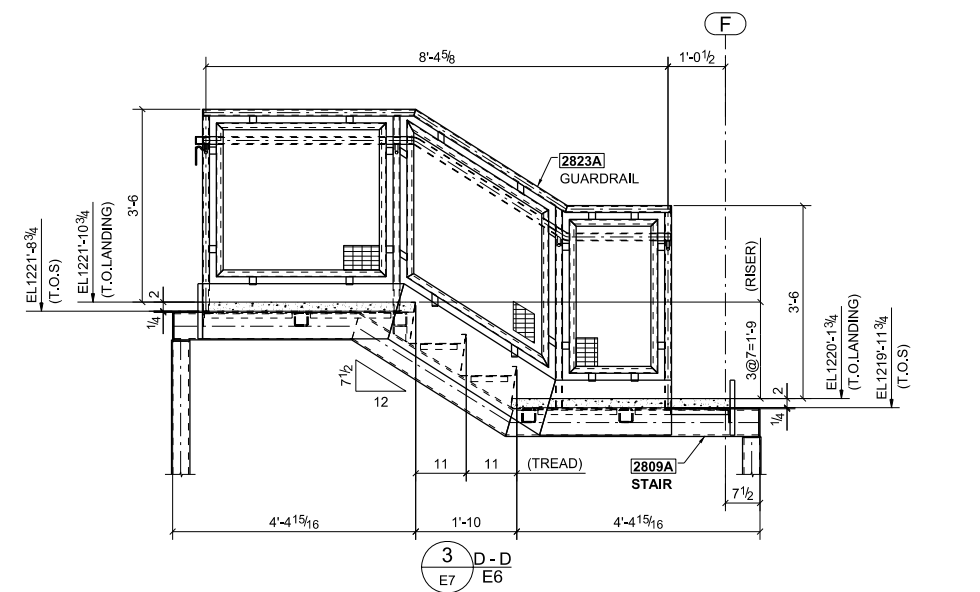
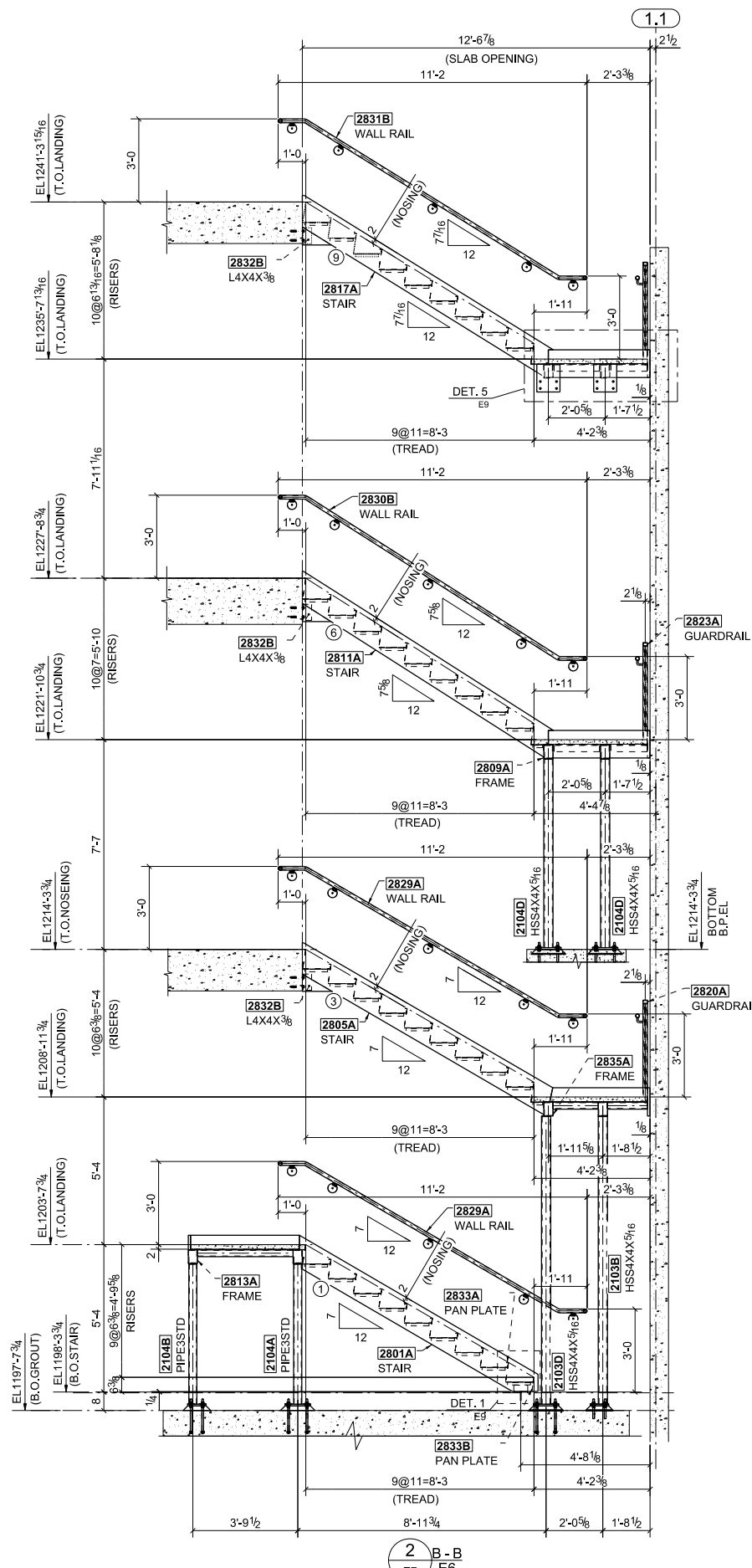
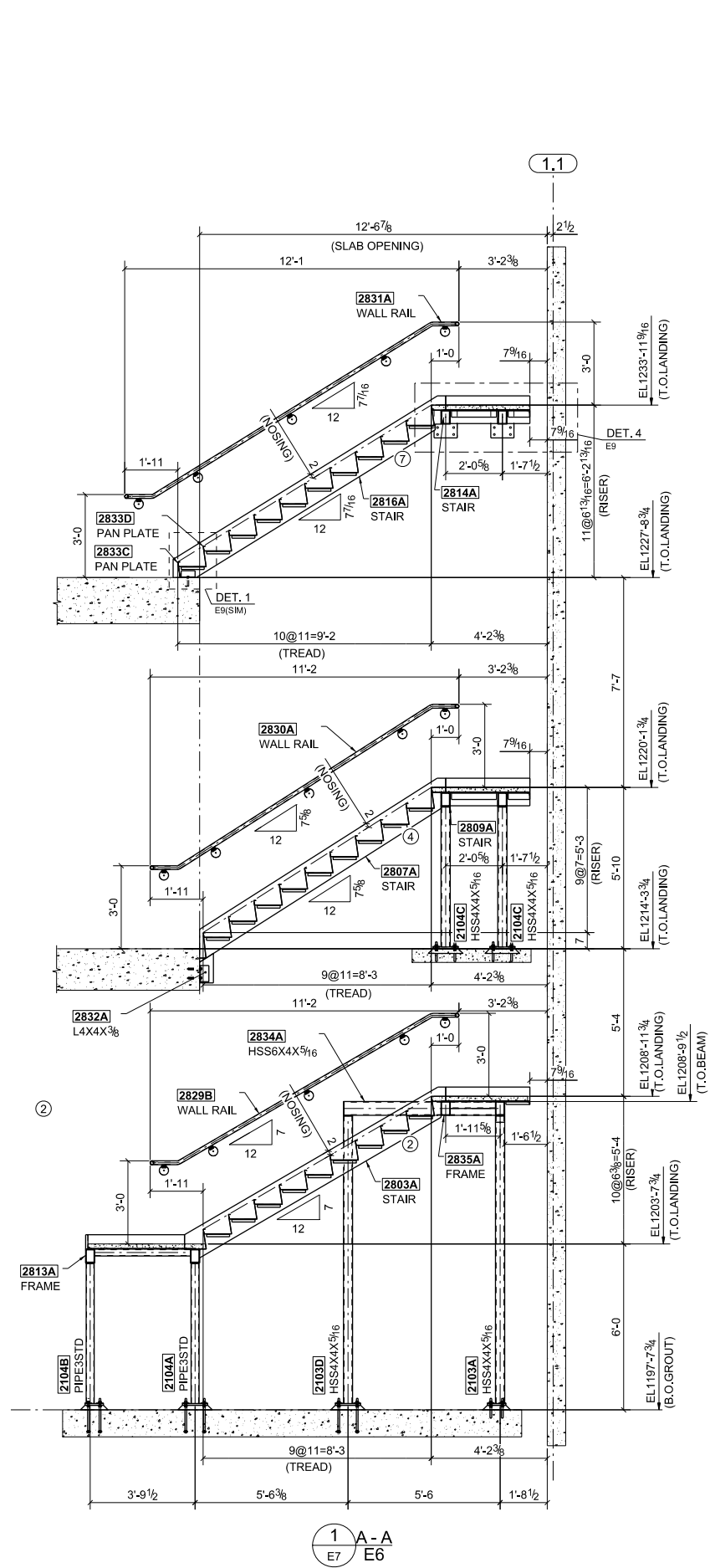
APPROVAL / REVIEW AUTHORITY:

APPROVAL BY THE OWNER OF SHOP DRAWINGS PREPARED BY THE FABRICATOR INDICATES THAT THE FABRICATOR HAS CORRECTLY INTERPRETED THE CONTRACT DRAWINGS. APPROVAL DOES NOT RELIEVE THE FABRICATOR OF THE RESPONSIBILITY FOR ACCURACY OF DETAIL DIMENSIONS, NOR THE GENERAL FIT-UP OF PARTS TO BE ASSEMBLED IN THE FIELD. UNLESS SPECIFICALLY STATED TO THE CONTRARY, ANY ADDITIONS, DELETIONS OR CHANGES INDICATED ON THE APPROVAL OF THE SHOP AND ERECTION DRAWINGS ARE AUTHORIZATIONS BY THE OWNER TO RELEASE THE ADDITIONS, DELETIONS OR CHANGES FOR CONSTRUCTION.

SIMSONA
 ENGINEERING SERVICES
 Simsona Corp.
 2275 Research Boulevard,
 Suite 500, Rockville, MD 20850
 Office: 301-774-6880
 Email: raj@simsona.com

CUSTOMER:		LINGO CONSTRUCTION SERVICES	
PROJECT:		21c OKC MUSEUM HOTEL	
LOCATION:		OKLAHOMA CITY, OK	
DESCRIPTION:		STAIR PLAN (STAIR#4)	
DATE:	09/07/2015	ISSUED FOR FIELD	
NO.	DATE	DESCRIPTION	DATE
		REVISIONS	
DATE:	09/07/2015	PRINT RECORD	
DRAWN BY:	ARJ	CHECKED BY:	VT
DATE:	09/07/2015	JOB NO.	0409
		SHEET NO.	E6





NOTE:
 1. Final finish floor elevations are provided by the contractor and shall be field verified prior to fabrication.
 2. In all cases - clear dimension from handrail to guard/wall shall be 1.5" minimum. Clear dimension for stairs shall be 3'-10 1/4" (wall to inside of guard - handrails encroach into this dimension 2.75" each side) -TYP.
 3. Max Riser height shall be 7" - minimum tread depth shall be 11" no exceptions.
 4. Fabricator and erector shall verify the above prior to fabrication and erection.

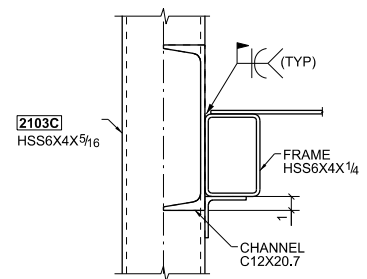
APPROVAL / REVIEW AUTHORITY:

APPROVAL BY THE OWNER OF SHOP DRAWINGS PREPARED BY THE FABRICATOR INDICATES THAT THE FABRICATOR HAS CORRECTLY INTERPRETED THE CONTRACT DRAWINGS. APPROVAL DOES NOT RELIEVE THE FABRICATOR OF THE RESPONSIBILITY FOR ACCURACY OF DETAIL DIMENSIONS, NOR THE GENERAL FIT-UP OF PARTS TO BE ASSEMBLED IN THE FIELD. UNLESS SPECIFICALLY STATED TO THE CONTRARY, ANY ADDITIONS, DELETIONS OR CHANGES INDICATED ON THE APPROVAL OF THE SHOP AND ERECTION DRAWINGS ARE AUTHORIZATIONS BY THE OWNER TO RELEASE THE ADDITIONS, DELETIONS OR CHANGES FOR CONSTRUCTION.

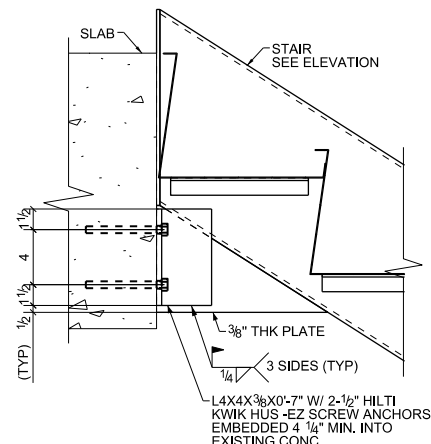


NO.	DATE	DESCRIPTION	DATE	NO.	TYPE	FOR	DRAWN BY: ARJ	CHECKED BY: VT	JOB NO.	SHEET NO.
		REVISIONS				PRINT RECORD	DATE: 09/07/2015	DATE: 09/07/2015	0409	E7

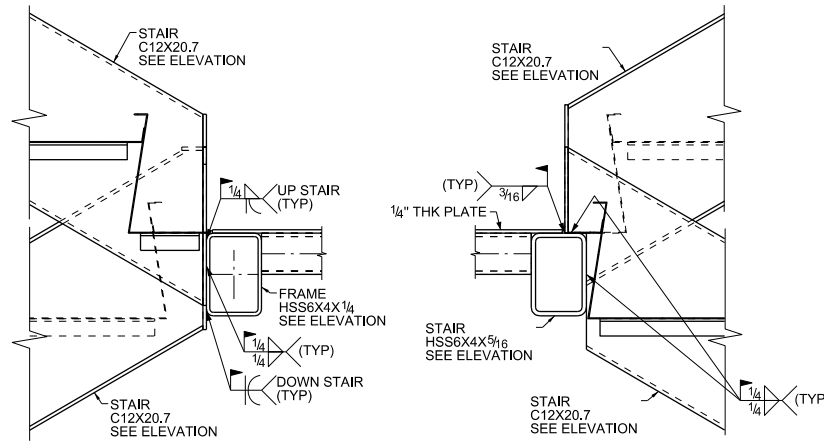
CUSTOMER:	LINGO CONSTRUCTION SERVICES
PROJECT:	21c OKC MUSEUM HOTEL
LOCATION:	OKLAHOMA CITY, OK
DESCRIPTION:	STAIR ELEVATION



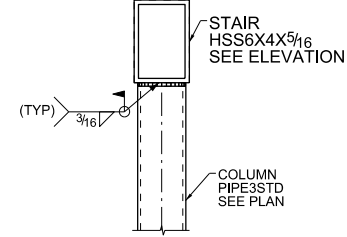
1 CHANNEL TO STAIR LANDING
E10 (TYPICAL CONNECTION DETAIL)



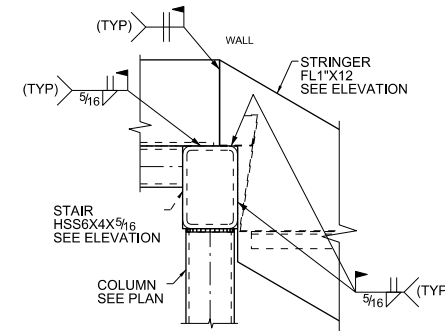
2 CHANNEL TO STAIR LANDING
E10 (TYPICAL CONNECTION DETAIL)



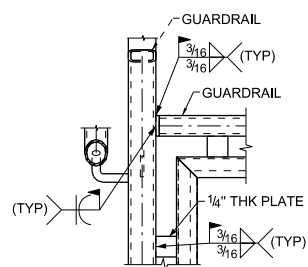
3 CHANNEL TO FRAME LANDING
E10 (TYPICAL CONNECTION DETAIL)



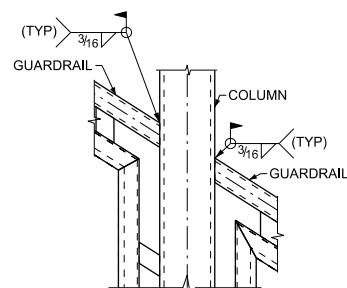
4 PIPE COLUMN TO STAIR LANDING
E10 (TYPICAL CONNECTION DETAIL)



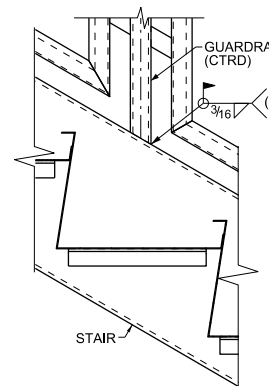
5 PLATE STRINGER TO FRAME LANDING
E10 (TYPICAL CONNECTION DETAIL)



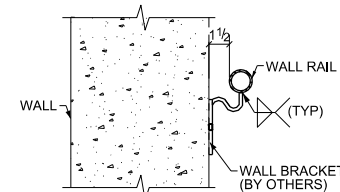
6 GUARDRAIL TO GUARDRAIL
E10 (TYPICAL CONNECTION DETAIL)



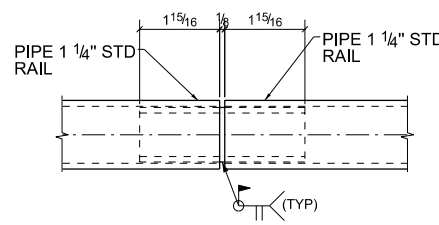
7 COLUMN TO GUARDRAIL
E10 (TYPICAL CONNECTION DETAIL)



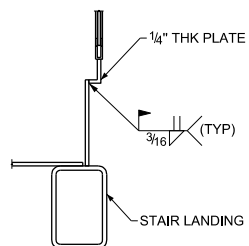
8 STRINGER TO GUARDRAIL
E10 (TYPICAL CONNECTION DETAIL)



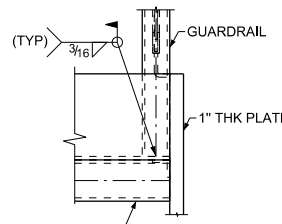
9 WALL RAIL
E10 (TYPICAL CONNECTION DETAIL)



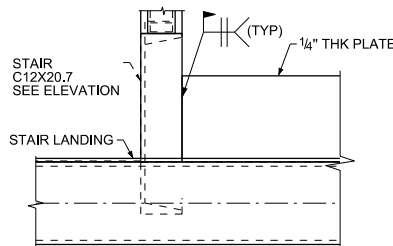
10 PIPE TO PIPE SPLICE
E10 (TYPICAL CONNECTION DETAIL)



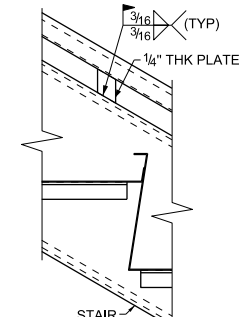
11 GUARDRAIL PLATE TO LANDING PLATE
E10 (TYPICAL CONNECTION DETAIL)



12 STAIR LANDING TO GUARDRAIL
E10 (TYPICAL CONNECTION DETAIL)



13 STRINGER TO STRINGER PLATE
E10 (TYPICAL CONNECTION DETAIL)



14 STRINGER TO GUARDRAIL PLATE
E10 (TYPICAL CONNECTION DETAIL)

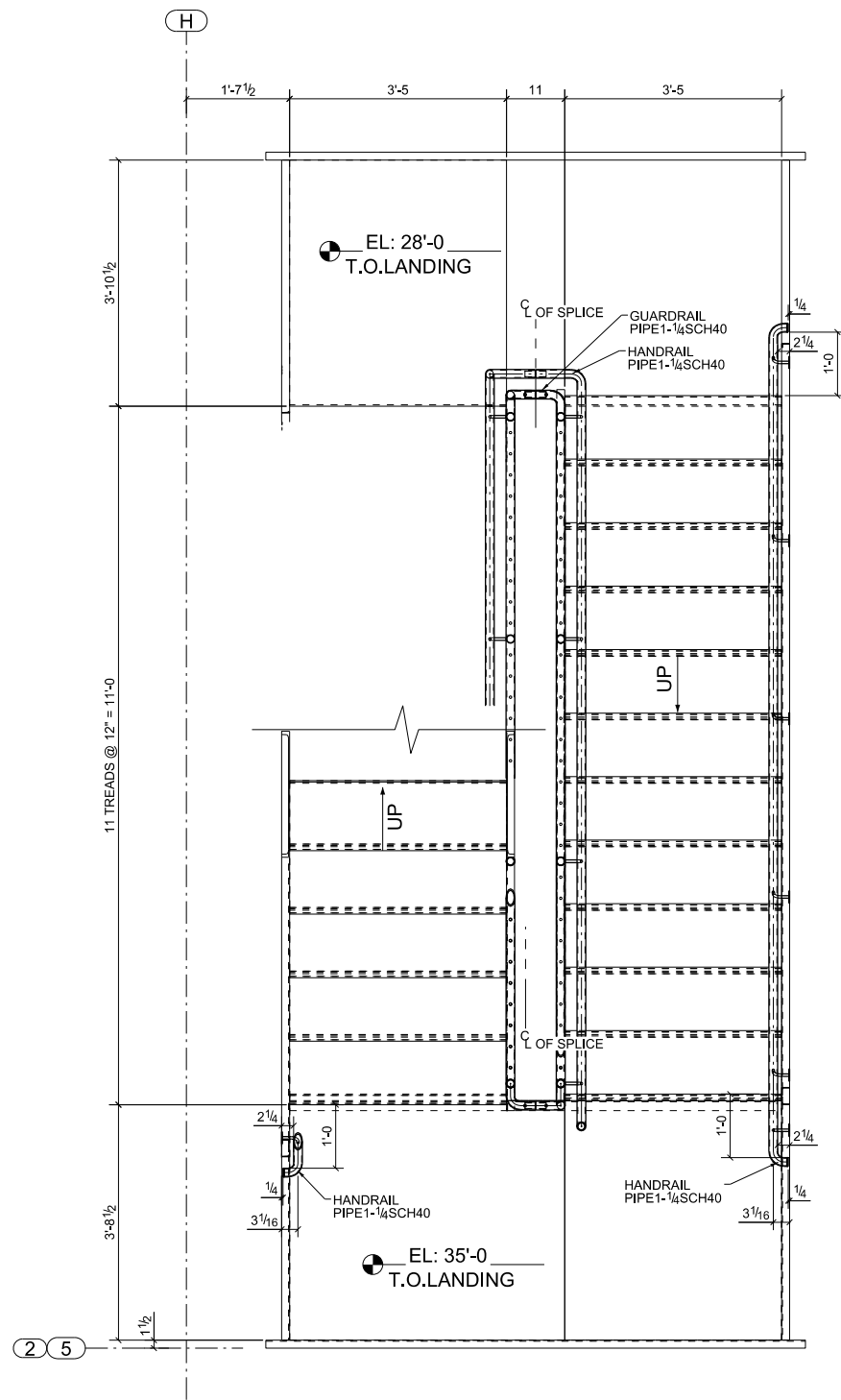
NOTE:
 1. Final finish floor elevations are provided by the contractor and shall be field verified prior to fabrication.
 2. In all cases - clear dimension from handrail to guard/wall shall be 1.5" minimum. Clear dimension for stairs shall be 3'-10 1/4" (wall to inside of guard - handrails encroach into this dimension 2.75" each side) -TYP.
 3. Max Riser height shall be 7" - minimum tread depth shall be 11" no exceptions.
 4. Fabricator and erector shall verify the above prior to fabrication and erection.

APPROVAL / REVIEW AUTHORITY:

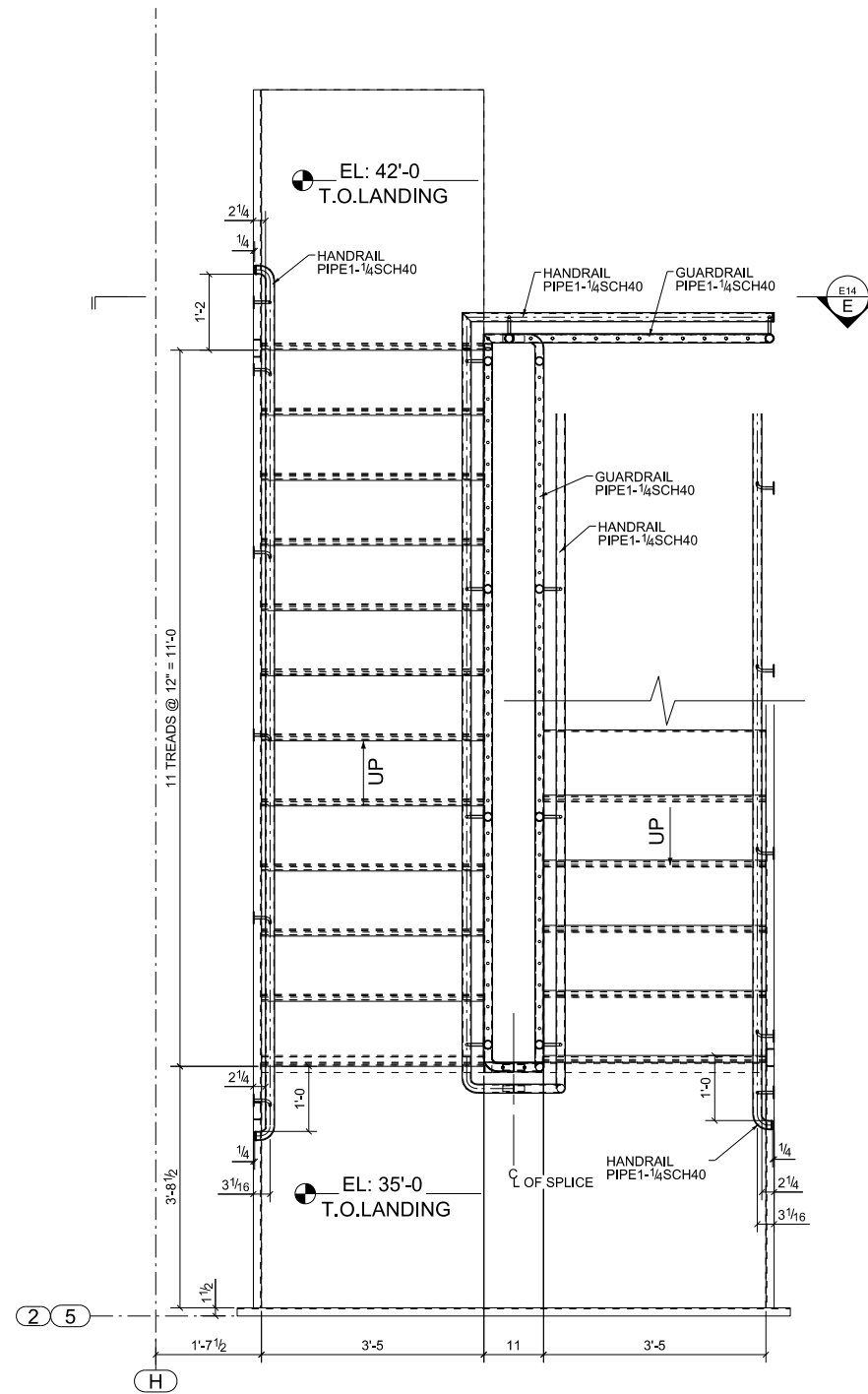
APPROVAL BY THE OWNER OF SHOP DRAWINGS PREPARED BY THE FABRICATOR INDICATES THAT THE FABRICATOR HAS CORRECTLY INTERPRETED THE CONTRACT DRAWINGS. APPROVAL DOES NOT RELIEVE THE FABRICATOR OF THE RESPONSIBILITY FOR ACCURACY OF DETAIL DIMENSIONS, NOR THE GENERAL FIT-UP OF PARTS TO BE ASSEMBLED IN THE FIELD. UNLESS SPECIFICALLY STATED TO THE CONTRARY, ANY ADDITIONS, DELETIONS OR CHANGES INDICATED ON THE APPROVAL OF THE SHOP AND ERECTION DRAWINGS ARE AUTHORIZATIONS BY THE OWNER TO RELEASE THE ADDITIONS, DELETIONS OR CHANGES FOR CONSTRUCTION.



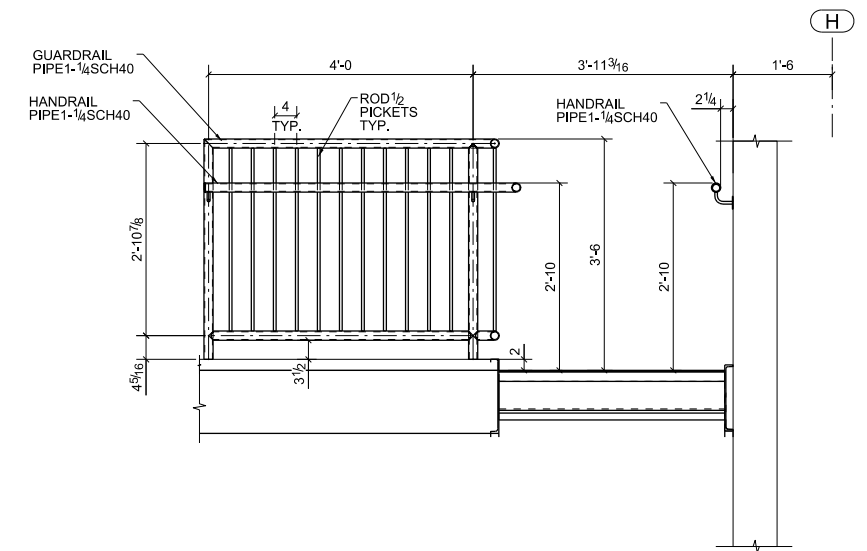
CUSTOMER:		LINGO CONSTRUCTION SERVICES								
PROJECT:		21c OKC MUSEUM HOTEL								
LOCATION:		OKLAHOMA CITY, OK								
DESCRIPTION:		TYPICAL CONNECTION DETAIL								
NO.	DATE	DESCRIPTION	DATE	NO.	TYPE	FOR	DRAWN BY: ARJ	CHECKED BY: VT	JOB NO.	SHEET NO.
1	09/07/2015	ISSUED FOR FIELD							0409	E10
		REVISIONS				PRINT RECORD				



STAIR PLAN LEVEL EL: 35'-0
ST-4-02 AS SHOWN
ST-4-01 AS MIRROR



STAIR PLAN LEVEL EL: 42'-0
ST-4-02 AS SHOWN
ST-4-01 AS MIRROR




E SECTION
E14 (REF-AE501)

APPROVER TO VERIFY:-
1. ALL DIMENSIONS & ELEVATIONS.
2. ALL GUARDRAIL ARRANGEMENTS.

GENERAL NOTES:-

1. PREP : SSPC-SP6
2. FINISH : GALVANIZED U.N.O
3. WELD : 70 SERIES WIRE
4. BOLTS :-
5. HOLES :-
6. 0'-3" NO PAINT AROUND OPEN HOLES FOR SC BOLTS

▲		
▲		
▲	ISSUED FOR APPROVAL	05/23/20
NO.	REVISION	DATE
PROJECT NAME: FBI BUILDING 4 AUDITORIUM RENOVATION		
LOCATION: FBI COMPLEX QUANTICO, VIRGINIA		
CONTR: BISCAYNE CONTRACTOR		
 Simsona Corp. 2275 Research Boulevard, Suite 500, Rockville, MD 20850 Office: 301-774-0880 Email: raj@simsona.com		
DRAWN BY: CB	DATE: 05/23/2015	CHECKED BY: MSB
JOB NO. -	SECTIONS	SHEET NO. E14

